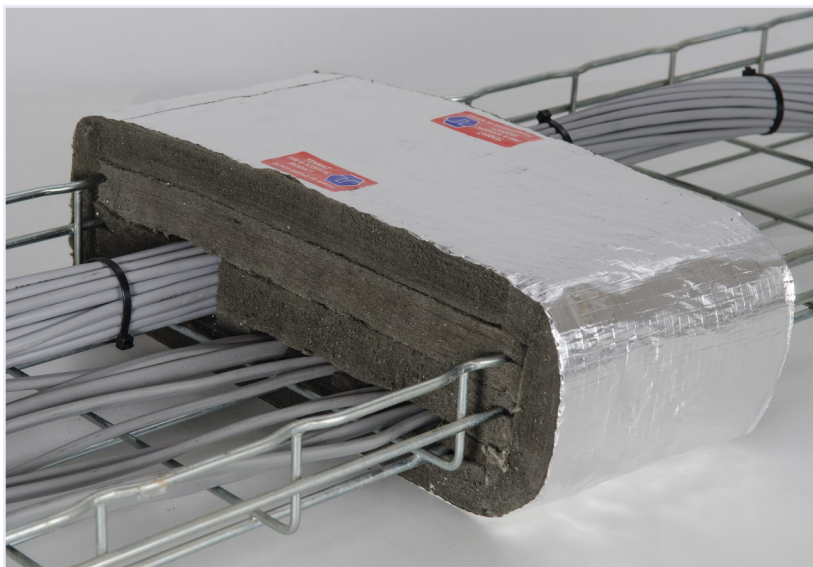


Key Features:

- 2 hours Fire Rated
- Acoustically rated
- Simple to install
- No mastic, screws, or metal sleeving required
- Can be fitted prior to running cables
- Firestops both the cable basket and cables



The use of Cable Trays and Cable Baskets is on the increase as the amount of cabling within buildings continues to grow. Cables are routed through a wide variety of building types including hospitals, apartments and hotels.

All buildings have walls and floors with fire and acoustic ratings. When cables are installed through such constructions their integrity and ability to perform to the required fire and acoustic standards are significantly reduced.

TENMAT as part of its continuing development of passive fire protection solutions, has developed a range of *FIREFLY* 108 Cable Basket Fire Sleeves. The Cable Basket Fire Sleeves offer a quick and simple way to maintain the fire and acoustic ratings of cable basket penetrations.

Product Dimensions

To Suit Cable Basket Size	Nominal Thickness	Nominal External Width/ Diameter	External Height	Length
75 x 54 mm	25-30 mm	145 mm	114 mm	180 mm
100 x 54 mm	25-30 mm	170 mm	114 mm	180 mm
150 x 54 mm	25-30 mm	220 mm	114 mm	180 mm
200 x 54 mm	25-30 mm	272 mm	114 mm	180 mm
250 x 54 mm	25-30 mm	324 mm	114 mm	180 mm
300 x 54 mm	25-30 mm	374 mm	114 mm	180 mm
400 x 54 mm	25-30 mm	478 mm	114 mm	180 mm
450 x 54 mm	25-30 mm	528 mm	114 mm	180 mm
Infill sheet	20 mm	180 mm	N/A	1000 mm

Product Description

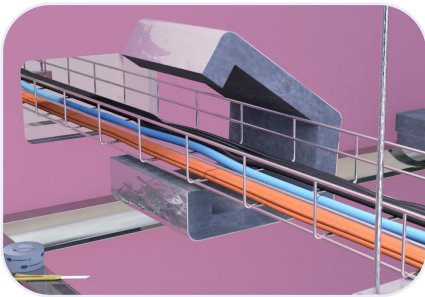
TENMAT's *FIREFLY* 108 Cable Basket Fire Sleeves are a unique range of products designed to speed up and simplify the firestopping of cable trays or baskets.

The compressible and fully intumescent material provides an effective fire and acoustic seal around both the cables and the cable basket itself. The Sleeves have been fire tested to BS 476: Part 20 and acoustically tested in accordance with BS EN ISO 140-3:1995 and BS EN ISO 717-1:1997.

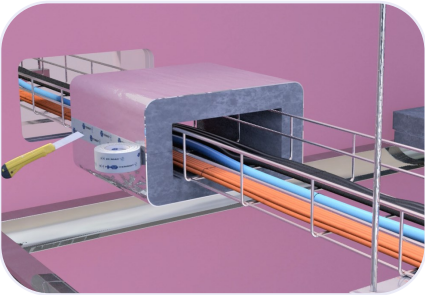
The Cable Basket Fire Sleeves are supplied in a standard length to suit all common wall constructions. The ready to install design does not require any additional metal work, support, fire rated sealants or foams.

General Fitting Instructions

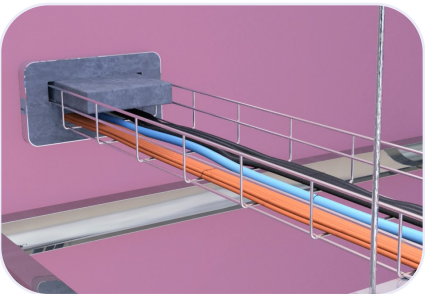
For detailed fitting instructions for various applications please contact **TENMAT**.



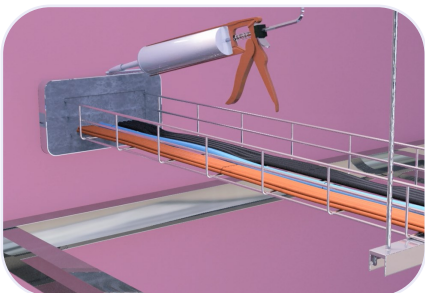
- Use the Fire Sleeve as a template when cutting the plasterboard to provide a snug fit around the Fire Sleeve
- Slit the sleeve along its length to allow easy installation around cable tray or basket



- Fit sleeve around tray or basket and re-seal with aluminium repair tape supplied



- Once cables have been installed they should be tightly sealed with **TENMAT** Infill Material



- If required, an intumescent sealant can be used to ensure a smoke and acoustic seal
- Installation in solid walls is also approved